

# Dental Hygiene, new user-interface

A brief guide to help orientate you to our new interface.

## BROWSING

Whilst the core functionality of the products remains the same, all the browsing functionality has been moved to the left-hand toolbar.

Content is now organized by media type and illustrated with thumbnails to make finding what you need quicker and easier than ever.

Images, text, movies and animations can also be saved and shared from here.

## IMAGE CONTROLS

The way you interact with the 3D model is still very much the same. Select a structure to highlight the image and display corresponding text, and use the rotation, layer and zoom controls beneath the image to navigate.

The screenshot displays the 'DENTAL HYGIENE' software interface. On the left is a vertical toolbar with icons for navigation and search. The main area shows a 3D model of 'Mandibular teeth' with one tooth highlighted in green. To the right is an information panel for the 'Mandibular 3rd molar (left)'. The panel contains text about mandibular molars, their function, and morphology. At the bottom of the interface are navigation controls for the 3D model, including rotation and zoom buttons. A green line highlights the toolbar and the 3D view. A green arrow points from the text 'IMAGE CONTROLS' to the 3D view. A green arrow points from the text 'You can now also click and drag the model to rotate.' to the 3D view.

**Mandibular molars (Teeth 17-19 and 30-32)**  
There are six mandibular molars, three right and three left; they are located posterior to the premolars and decrease in size distally. The third molars are the last teeth in each dental arch and are often referred to as the **'Wisdom teeth'**. In 20% of the population one or more of these teeth never develop and therefore are missing from the dental arch.

The molars have the largest chewing (occlusal) surfaces of all the teeth, usually possessing between three and five cusps (usually three large cusps and one smaller cusp) separated by fissures. Molars have the shortest crowns (cervico-occlusally) that, from an occlusal view, are square or rhomboid shaped; their greatest dimension being buccolingually. The mandibular molars have two roots found mesially and distally; the distal root is the shorter of the two, and they are often fused.

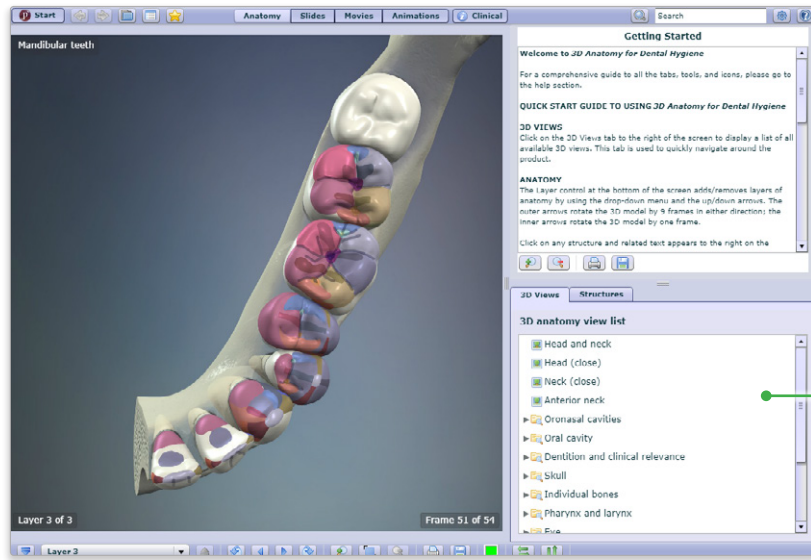
**Function**  
The molars grind food and maintain the integrity of the dental arch preventing the other teeth from moving out of alignment. They also play a role in preventing the appearance of premature aging by maintaining the vertical dimension of the face and supporting the cheeks.

**Morphology of the third left mandibular molar (Tooth 17)**  
The third left mandibular molar or tooth 17, using the **Universal Numbering System**, lies distal to the left second molar. The third molars are the smallest molars and most variable in form.

**Distinctive features**  
**Crown:** bulbous, wider mesiodistally, they are smaller than the 1st and 2nd mandibular molars.  
**Cusps:** variable, the lingual cusps are often larger than the buccal cusps.  
**Occlusal surfaces:** rectangular or oval, wrinkled due to

Visible structures

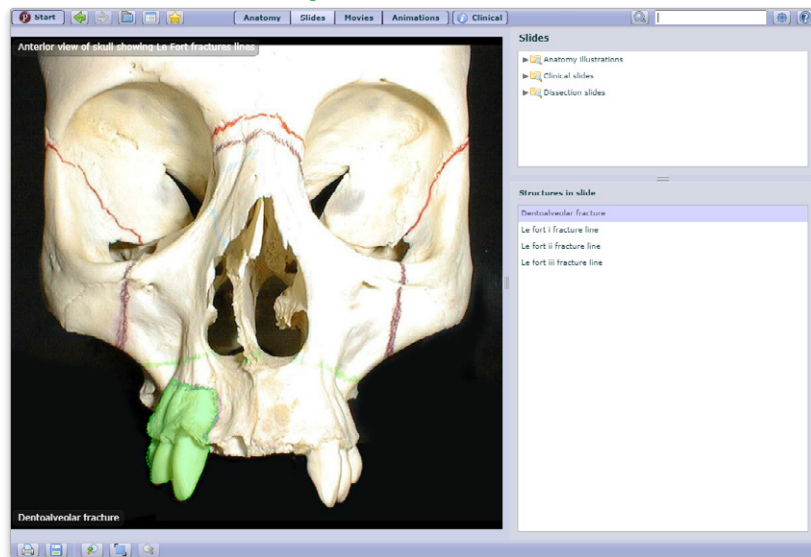
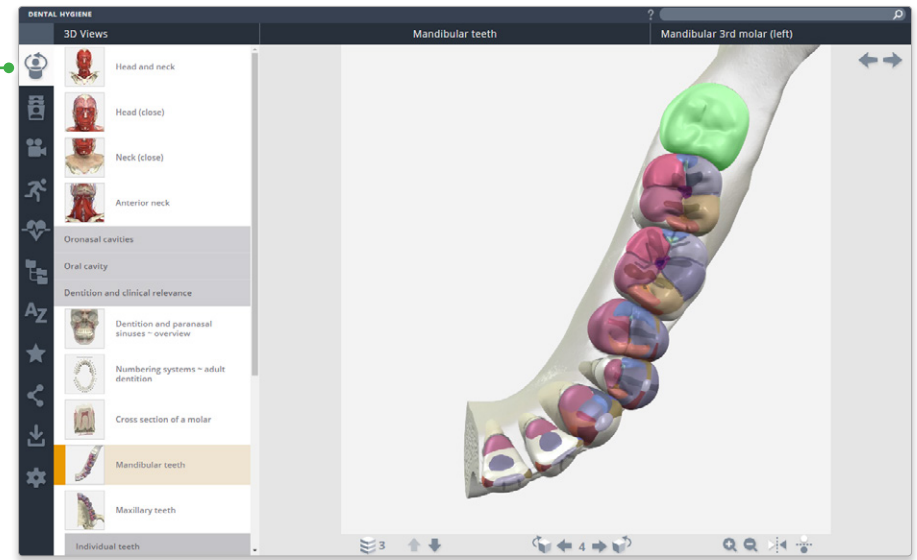
You can now also click and drag the model to rotate.



### 3D VIEWS

3D Views can be accessed using the top button of the left hand tool bar.

Thumbnails have been added to help you quickly browse the models.

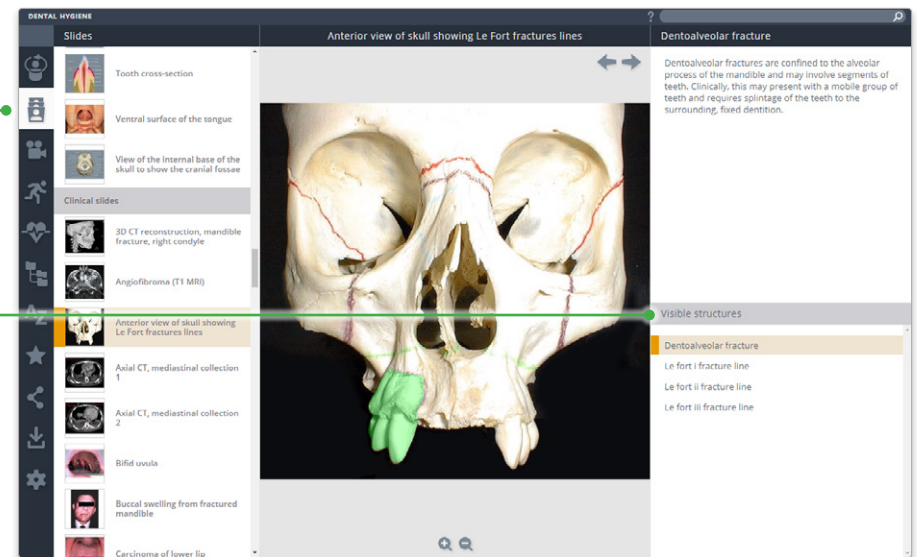


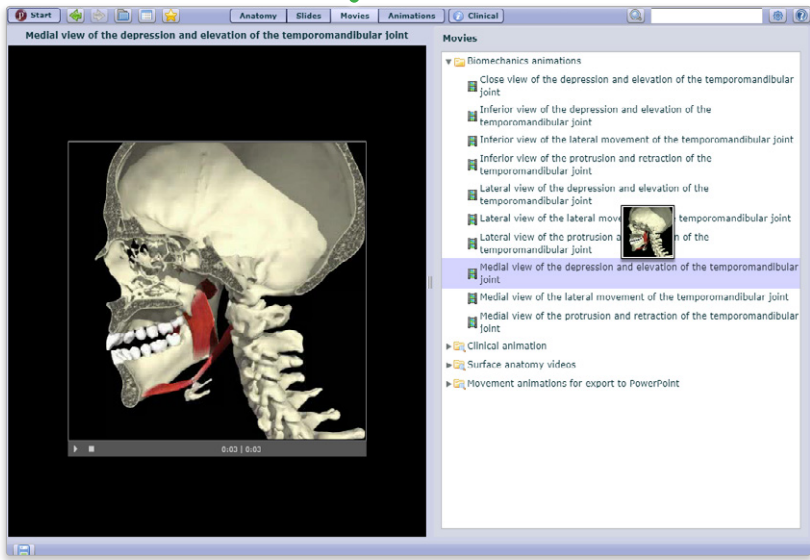
### SLIDES

The next button opens the slides panel. Again use the thumbnails to quickly browse the images available.

Select a structure in an interactive slide, such as the Anatomical Illustrations to display accompanying structure text.

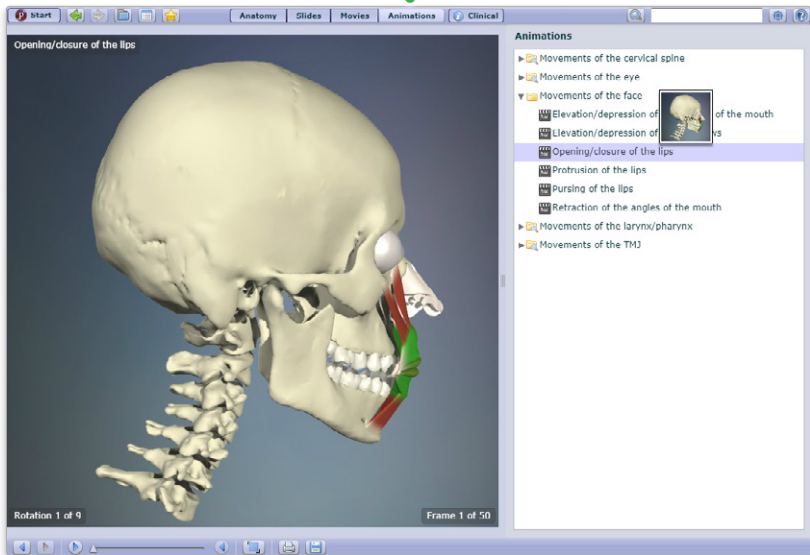
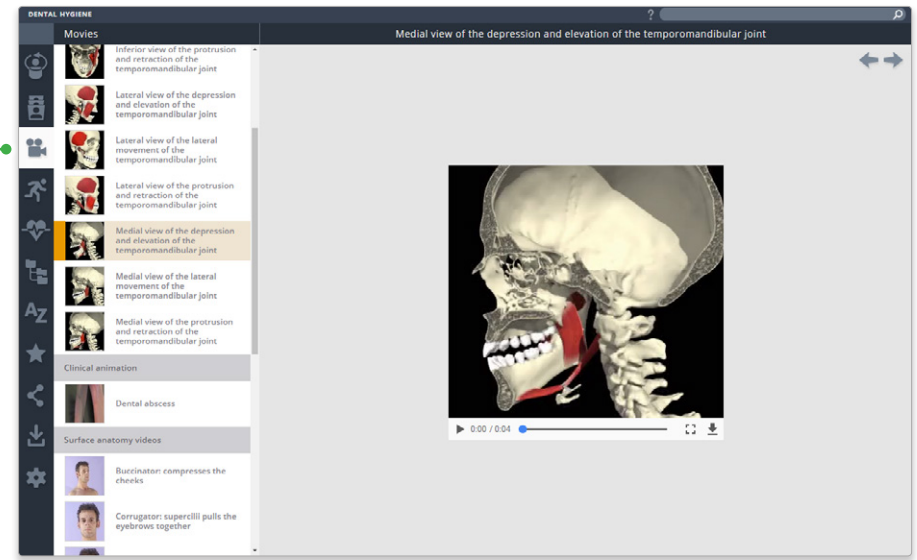
A list of highlightable structures can still be seen by opening the Visible structures window.





**MOVIES**

Movies can also be browsed visually and can now be played full screen.

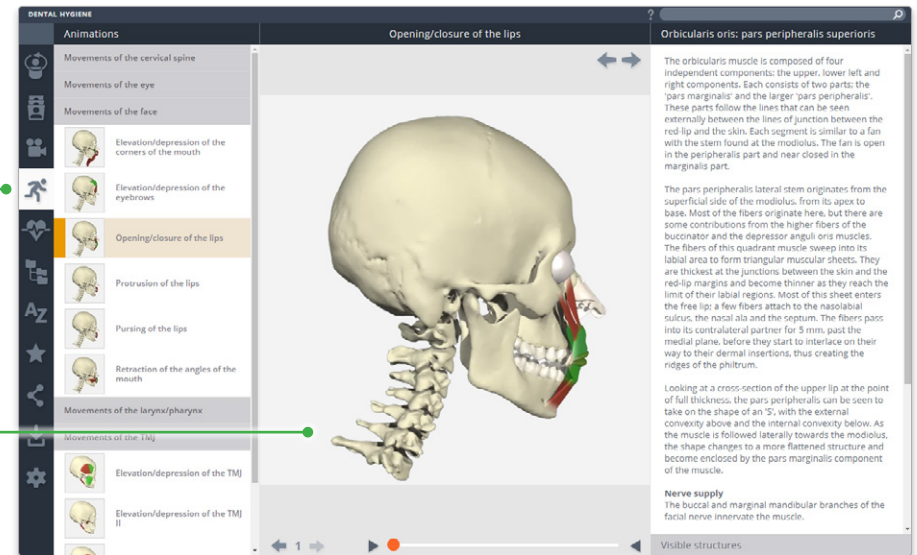


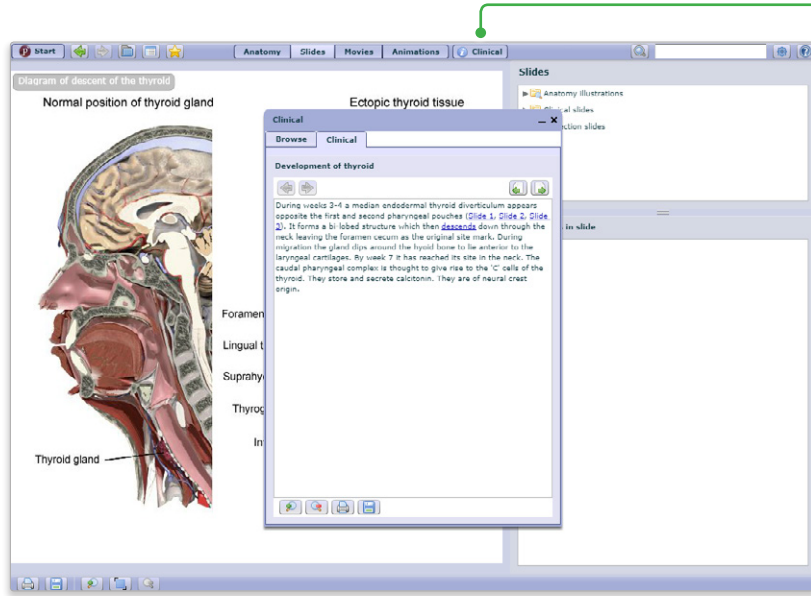
**ANIMATIONS**

Animations are movies showing muscle movement that can be rotated 360 degrees. Rotate the animation whilst it is playing to view the movement from different angles, and select any structure during playback to display its name, along with descriptive text.



You can now also click and drag the model to play the animation.

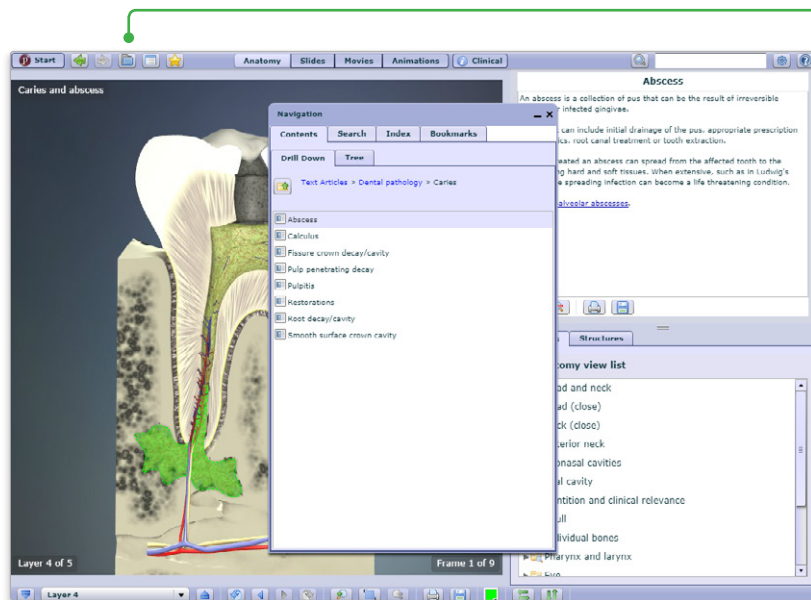
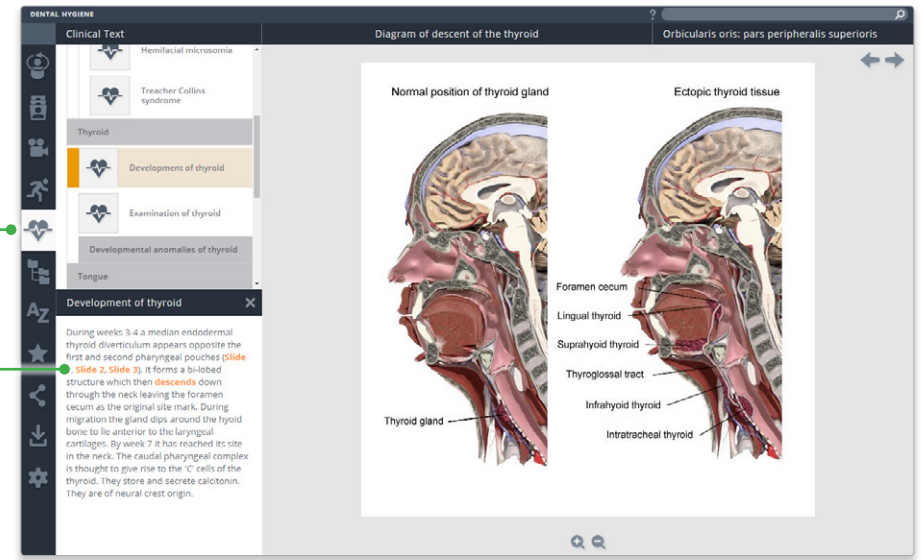




**CLINICAL TEXT**

The Clinical Text now appears in a panel below the Clinical contents folders. It remains open while you explore the contents of other tabs and can be closed at any time by clicking on the cross to the right of its title.

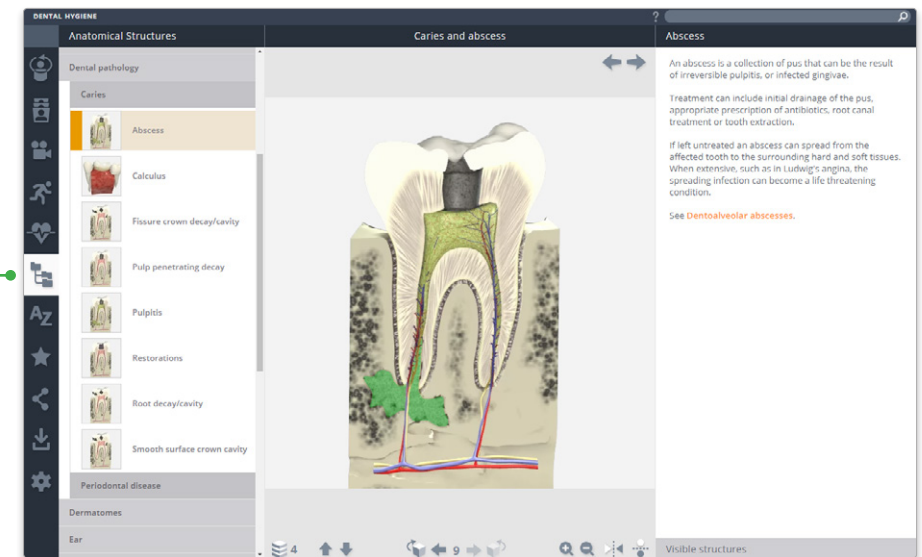
The text often contains links to related content, which will appear in the main view pane.

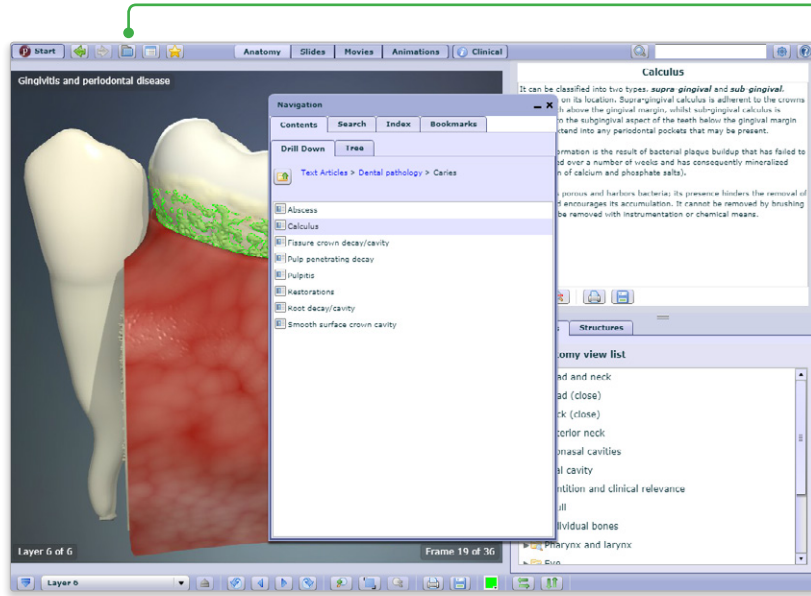


**ANATOMICAL STRUCTURES**

Use the Anatomical Structures panel to systematically browse the structures included in the product.

Also, leave the Contents panel open and select a structure in the image to discover its position in the hierarchy.

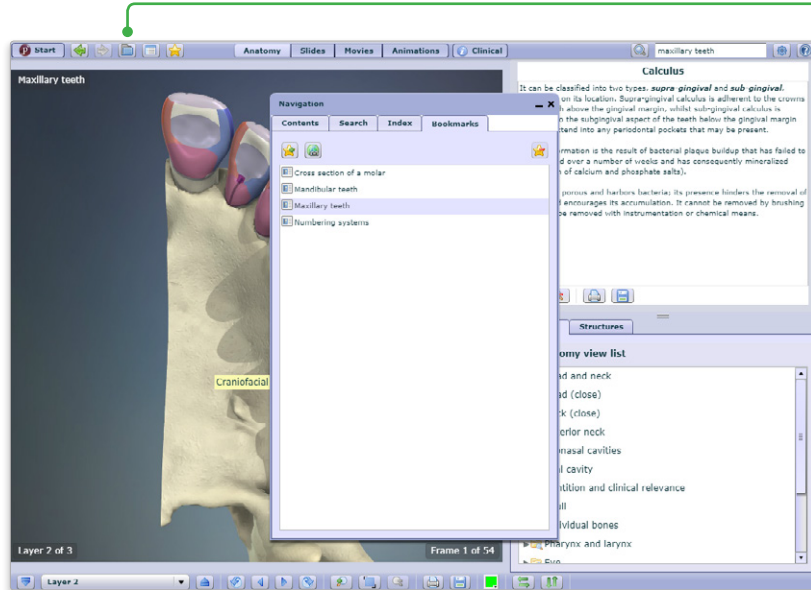
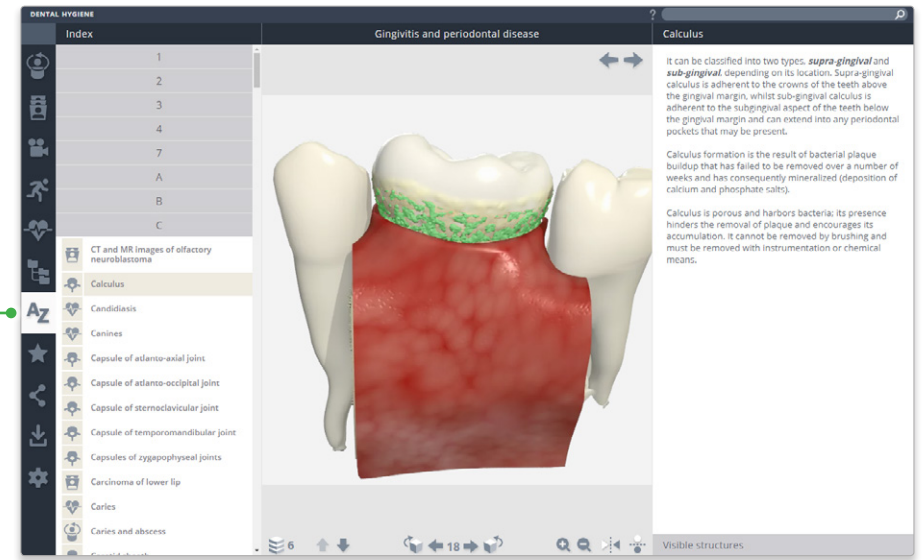




**INDEX**

Every structure, slide, movie and view is listed here alphabetically.

This allows for fast, efficient retrieval of content across all media types.

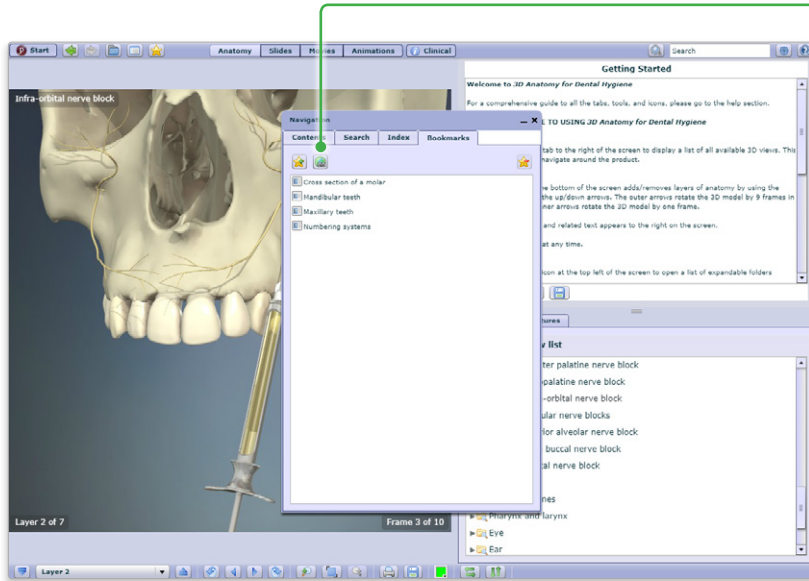


**FAVORITES**

Arrange your favorite images into folders, rename them and edit their order. Ideal for preparing presentations or lectures.

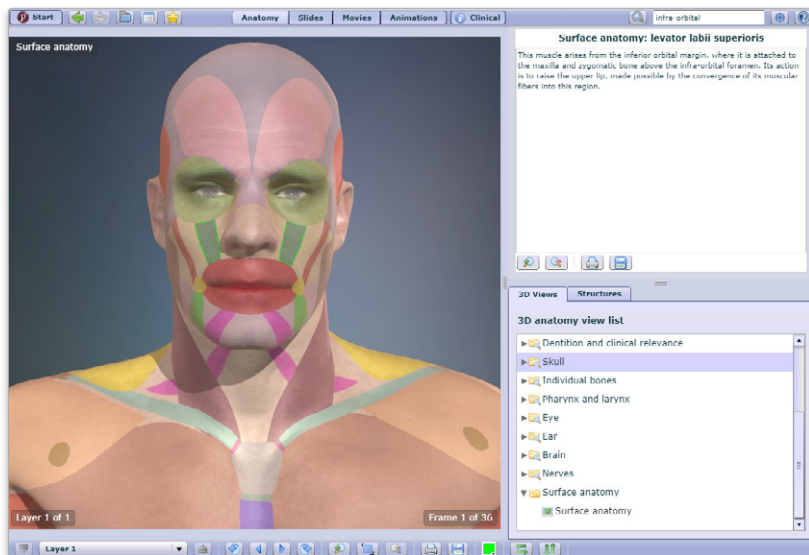
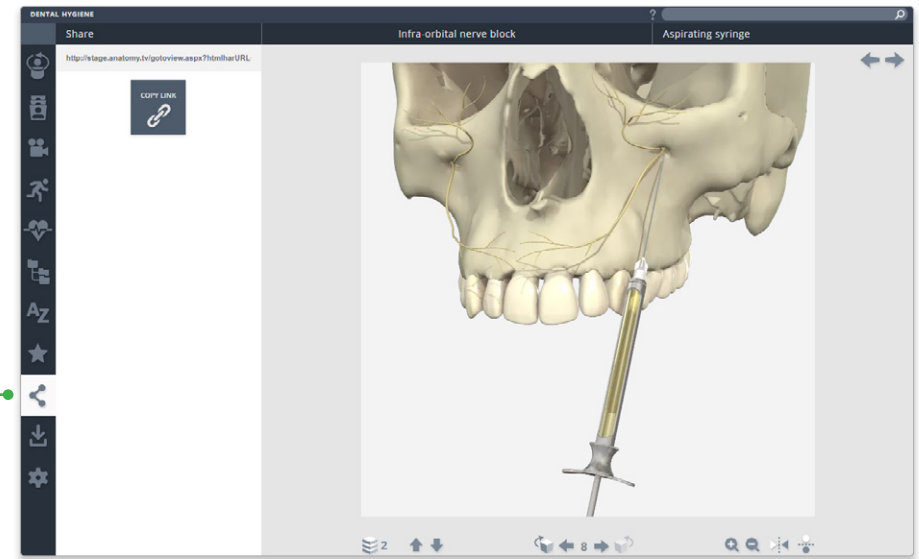
Export and import favorites to access from any PC or Android device.





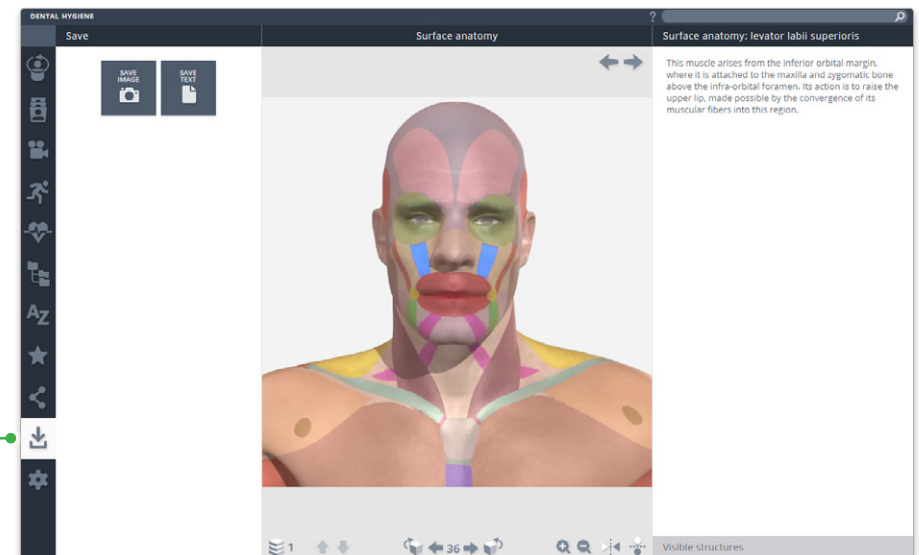
**SHARE**

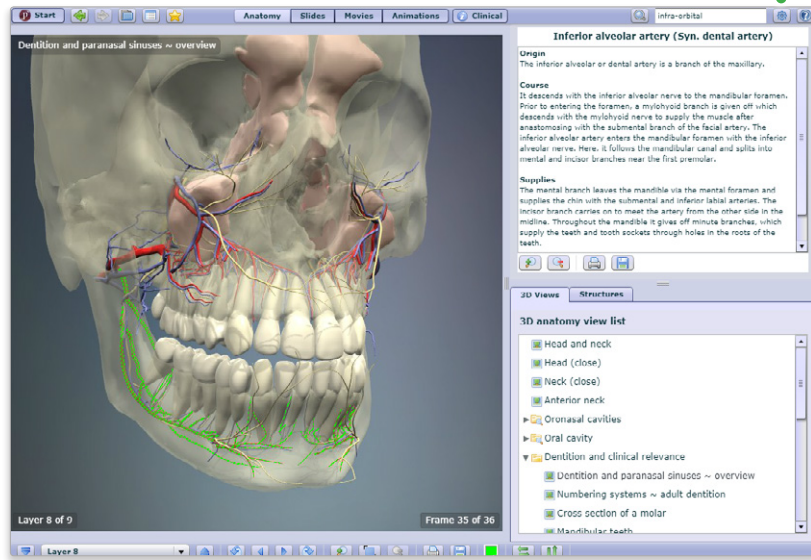
Direct other users to exactly the image you want them to see using our share function – use the copy link button on PC and Android devices, or select and copy the link on iPad.



**DOWNLOAD**

Save images, movies and text directly to your device from one place.



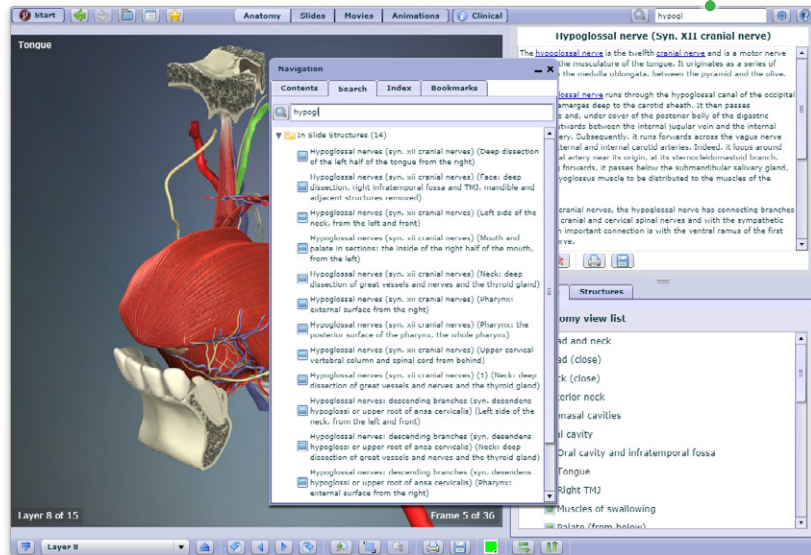
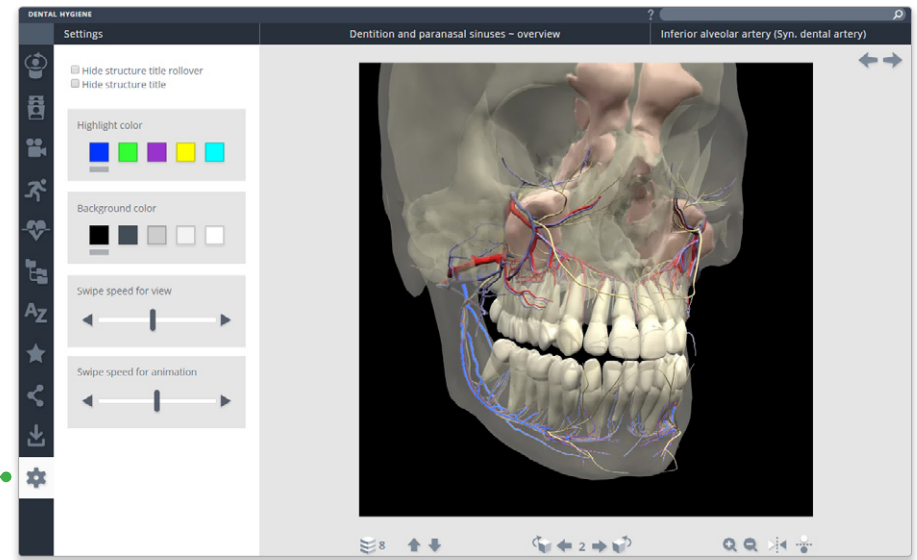


**SETTINGS**

Through the customizations in settings, you can now:

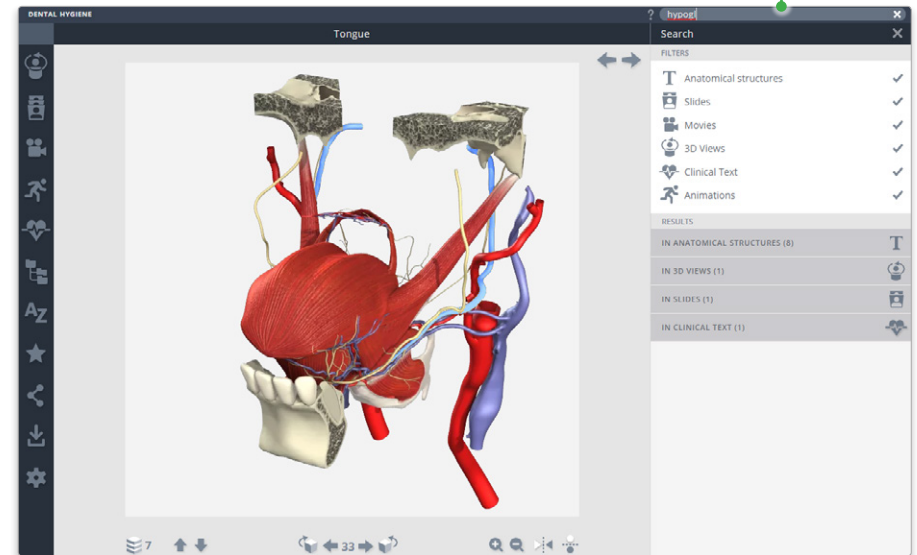
- hide the structure title and rollover labels for self quizzing or group testing;
- adjust colors of the highlight or background\* to meet group or personal accessibility preferences;
- adjust the run-speed at which the views and animations rotate.

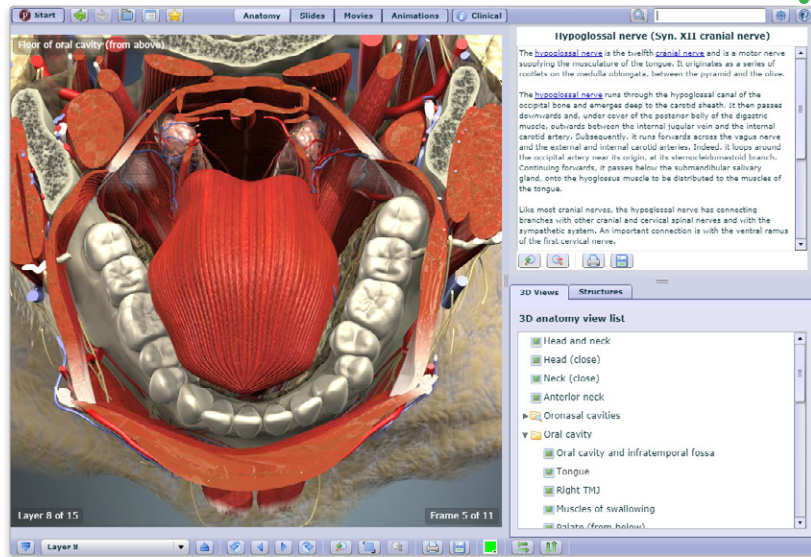
\* Currently, background color can only be adjusted in Chrome on PC, Mac and Android.



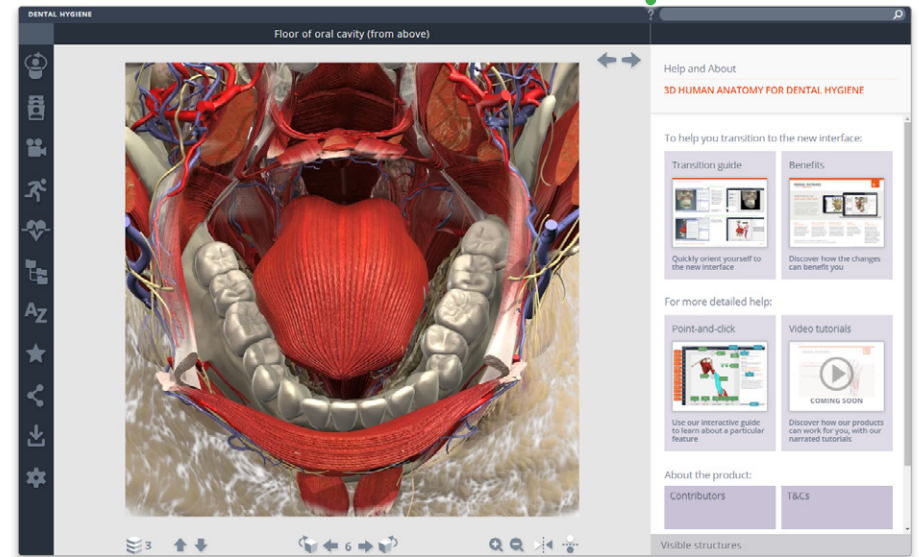
**SEARCH**

Use the search to find any content type. Use the filters to hone down your results.





**HELP**  
 For more information on how to use the product, please see the Help for an interactive point-and-click guide.  
 Video tutorials will be added soon.



**CLOSING THE RIGHT PANEL**  
 Click on the right title header

**CLOSING THE LEFT PANEL**  
 Click on the active menu tab

**CLOSING BOTH PANELS**  
 For even more focus, both panels can be closed

